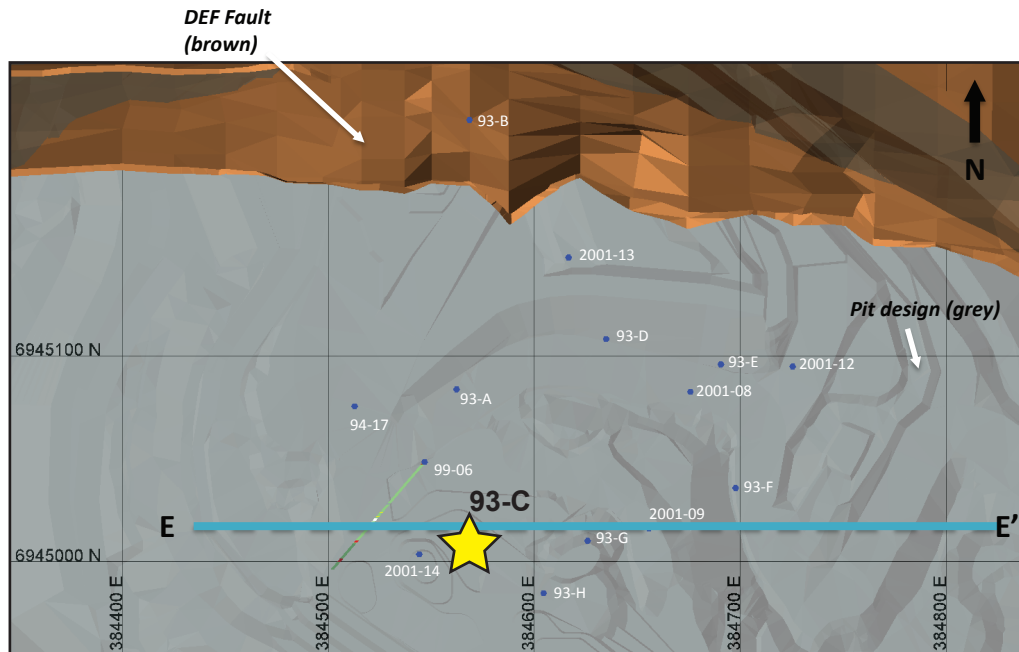


## Minto deposit (Yukon MINFILE 115I 021, 022)

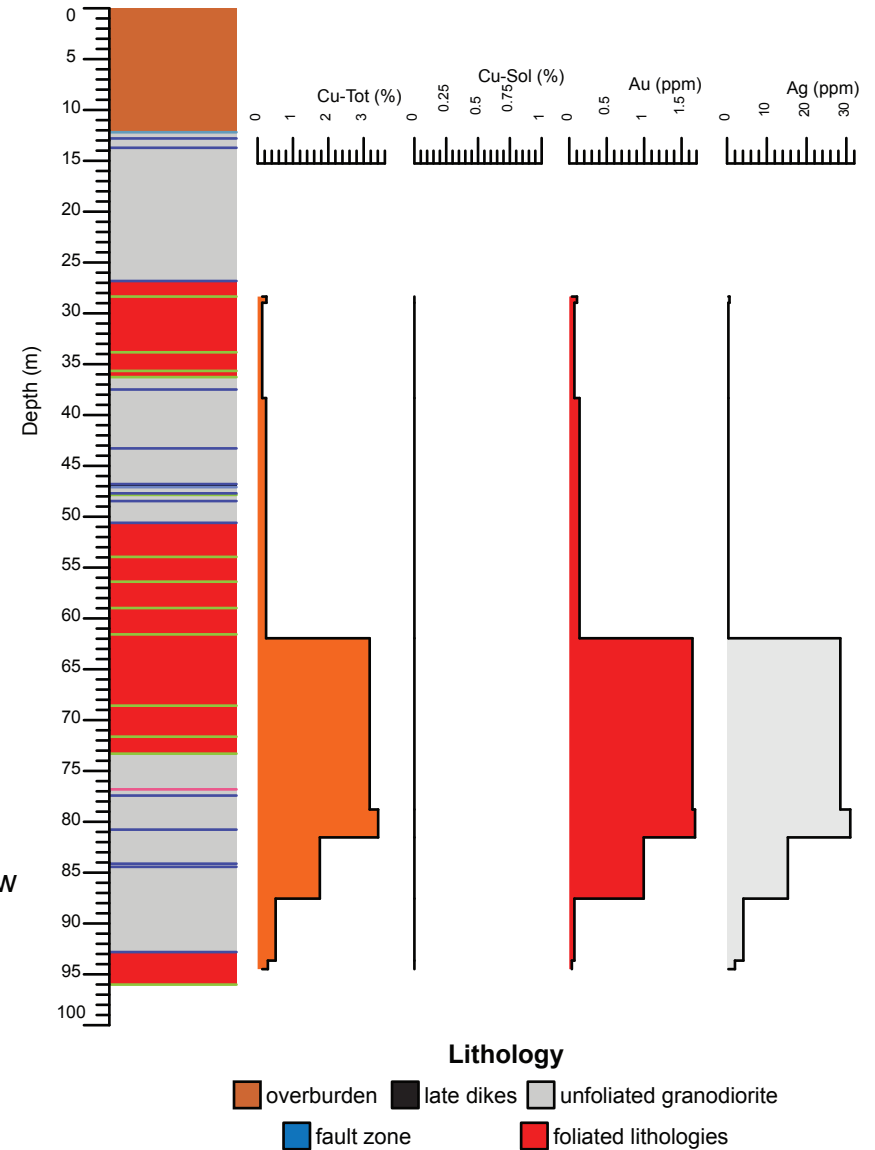
### Drill Hole: 93-C, Minto Main deposit

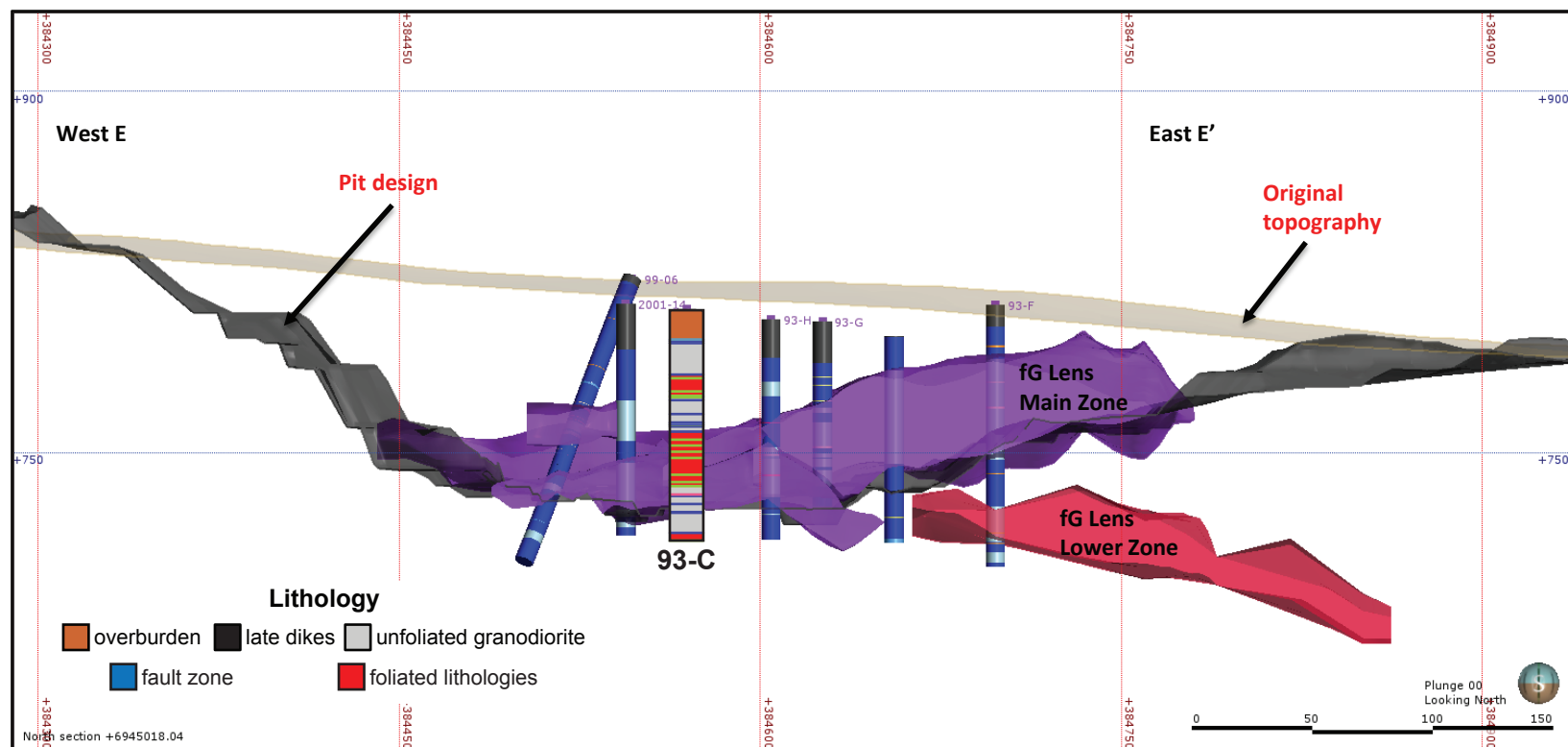
Area	Hole No.	Azimuth	Dip	Length (m)	Collar coordinates (NAD83, Zn 8)
Minto Main	93-C	0	-90	96.01	384569mE, 6945007mN



Above: Orthophoto of Minto area. Collar location of 93-C shown by yellow star, blue circles show collar locations of other drill holes in YGS collection.

Right: Simplified strip log with selected assays.





Above: Simplified vertical east-west cross-section through the Minto Main pit.

Right: Selected assays through Minto Main lower zone. Cu - Tot = sulphide and non-sulphide copper, Cu-Sol = non-sulphide copper

Hole	From (m)	To (m)	Interval (m)	Sample	Cu (%)	Cu-Sol (%)	Au (ppm)	Ag (ppm)
93-C	28.35	29.57	1.22	3159	0.3	0.0	0.1	0.6
93-C	29.57	30.48	0.91	3160	0.1	0.0	0.1	0.3
93-C	47.09	48.46	1.37	4560	0.2	0.0	0.1	0.3
93-C	76.81	77.42	0.61	4561	3.2	0.0	1.6	28.5
93-C	80.77	82.3	1.52	4564	3.4	0.0	1.7	31.0
93-C	82.3	84.43	2.13	4565	1.8	0.0	1.0	15.3
93-C	92.81	94.49	1.68	4562	0.5	0.0	0.1	4.1
93-C	94.49	96.01	1.52	4563	0.3	0.0	0.0	2.0